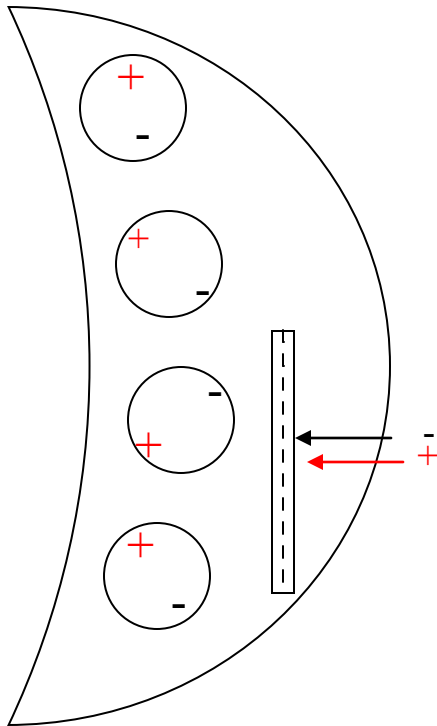


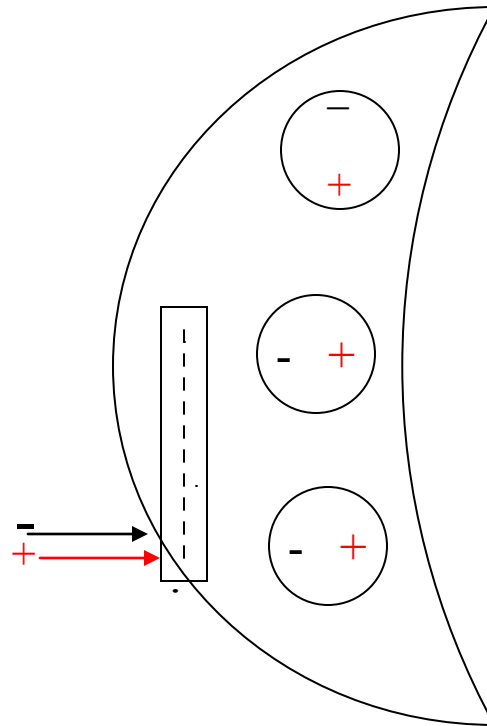
HUD & DIC LEDS

HUD



HUD pins to test: Count 6 pins down from the top
Pin # 6 is positive
Pin directly above is pin 5. This is the ground.

DIC



DIC pins to test. Bottom **pin #10 is positive.**
Pin directly above is pin #9 Negative.

Please read instructions completely first.

Instrument cluster removal and partial disassembly is required and we recommend this be done by a qualified technician.

These instructions are to help you position the leds in the correct orientation. Leds are polarity sensitive so they must be in the correct position. The **positive side of the led is marked in red paint on the back of the leds.** This view is looking at the back of the HUD and DIC panels. This diagram shows the position of the + and - contacts after they have been rotated into position, about 1/8 of a turn clockwise. If the leds are very tight in the holes it may be necessary to use a small round file to make the hole slightly larger. Just a couple swipes from each hole should be all that's needed. You can also test panels before re-installing them by using a 9 volt battery connected to the Positive and negative pins on the back of the panels. The Page button will be dimmer than the other buttons. This is normal with leds. The wiring harness is also long enough to set the cluster on the floor and plug it in to test. Always test before re-installing the cluster.