



## Rear Diffuser Installation Instructions

### Guidelines

- ◆ For complete instructions in color, please go to our website at [www.ivsauto.com](http://www.ivsauto.com)
- ◆ Do not use the diffuser as an attachment point for tie downs
- ◆ Every 3-6 months, make sure all fasteners are secure and check for any signs of detachment.
- ◆ It is recommended that 2 people install this kit
- ◆ During the painting process, make sure that the parts are not baked at more than 240 degrees (F).
- ◆ It is best to remove the 2 rear tire/wheel assemblies for this installation

### Included in kit:

Letter	Part Number	Description	Quantity
A	9006-1002-01	Diffuser-Outer	1
B	9006-1003-01	Diffuser-Inner	1
C	85032-PA	Clip (Silver)	16
D	N/A	8mm U-Clip (Black)	6
E	N/A	Double Sided Tape	4
F	95038-XX	Adhesion Promoter	1
G	65001-XX	8mm Push Pin	2

### Tools Required

- ◆ Push Pin Puller
- ◆ 7mm socket
- ◆ #2 Screwdriver
- ◆ 9.5mm or 3/8" drill bit

### Installation Instructions-Vehicle Prep and Part Prep

**Note:** Prior to performing installation, make sure the vehicle surface and diffuser are at least 65° F (18°C). Also, clean all tape contact areas of vehicle with 80/20 alcohol/water solution. Make sure all areas are dry and free of all dirt and contaminants.

**Note:** With 3/4" masking tape, tape off the two outside tab locations with masking tape before having part painted. Remove masking tape before applying the 3M adhesive double sided tape. **See Picture 1.**

- 1) Wipe down outside tabs with 80/20 alcohol/water mix. Allow to dry.
- 2) Apply supplied adhesion promoter to tape area. Allow to dry.

- 3) Apply double sided tape to the outside tabs of the diffuser covering entire surface. 2 pieces of tape are supplied with your kit. **See picture 2.**
- 4) Open trunk lid and remove both plastic corner covers by removing 3 push pins on both sides. **See picture 3.**
- 5) Unplug both tail lamp harness connections.
- 6) Remove 4 fasteners holding each of the rear of the wheel well liners. (Rear 4 fasteners only) (1) 7mm head bolt and 3 screws. **See picture 4.**
- 7) Taking caution not to flex the fascia, grab the front of the rear fascia and pull outward to release the tabs. **See picture 5.**
- 8) Using two people, pull the rear fascia from the rear and remove. Place the fascia on a soft surface as installation of the new diffuser will be done off car. **See Picture 6.**
- 9) From the inside of the fascia, remove the honeycomb EA bracket attached to the OEM diffuser. This can be accomplished by leaving the wire harness attached to the bracket, but unplugging all connections to the lights. You will also need to remove the 4 bolts holding the bracket to the OEM diffuser. **See picture 7.**
- 10) Remove the OEM diffuser by sliding the tabs through the slots in the fascia and remove from the front. **See Picture 8.**
- 11) Remove the 4 clip nuts from the OEM diffuser as they will be used again in the installation process.

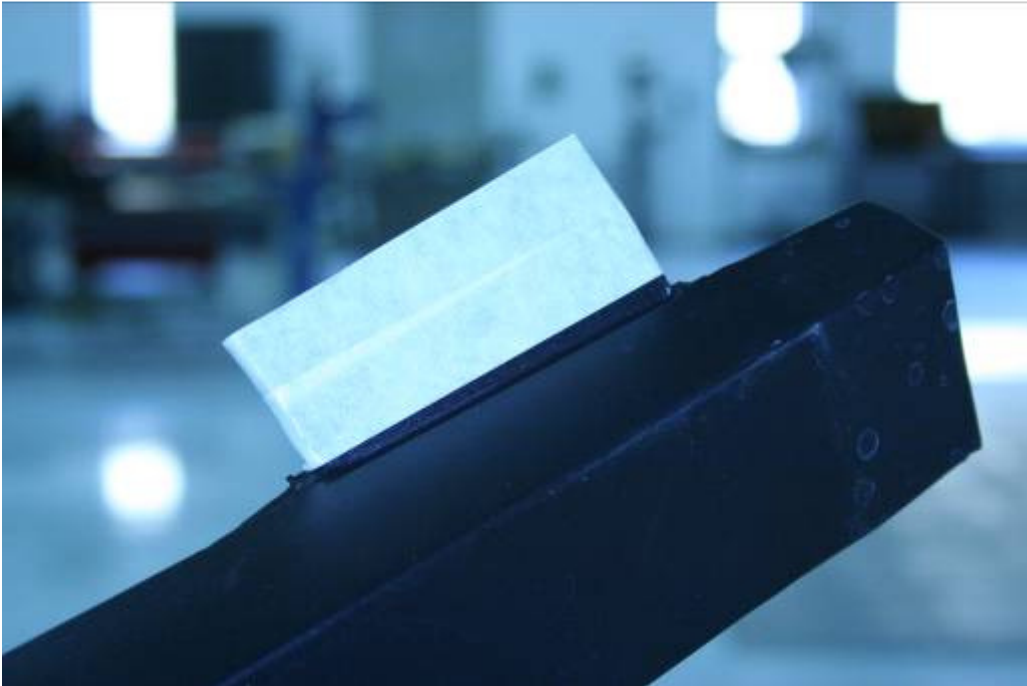
### **Installation Instructions-Rear Diffuser to Fascia**

- 1) Take the inner section (B) of the diffuser and insert the (4) tabs through the outer section (A) of the Havoc diffuser. From the backside of the diffuser, install 4 (C) clips (silver) to the through tabs of the diffuser-inner. Make sure the clips fit tight against wall of the outer section. If the clips are not flush, trim a small amount of length off the tabs. **See picture 9.**
- 2) Using 4 (D) clips (black), match up the 4 forward tabs and slide over the top of both, mating the inner and outer sections together. **See picture 10.**
- 3) Take the Havoc rear diffuser and feed tabs through the slots in the fascia (opposite of removal process). Using the remaining 2 (D) clips (black), match up the tabs and slide over the top of both rear diffuser and fascia. **See picture 11.**
- 4) Insert the 12 (C) clips (silver) over the remaining tabs, making sure that the angled section of the clip sits flush with the fascia. **See picture 12.**
- 5) Insert the 4 clip nuts removed from the OEM diffuser and attach to the 4 stand off's on the new diffuser. **See Picture 13.**
- 6) Install the honeycomb EA bracket reversing the removal process above. Make sure the 4 bolts removed in step 9 of the "Vehicle Prep and Part Prep", get reinstalled to the new diffuser. Make sure all harnesses are properly secured to the lights.
- 7) Clean tape contact areas located inside of rear fascia

**NOTE: Holding the fascia in car position, make sure everything lines up before re-installing on the vehicle.**

- 8) Install the fascia reversing the removal instructions.
- 9) Take the 2 taped sections and position so they are sitting inside the lower lip of the rear fascia. Remove the tape backing and firmly press so the tape adheres to the fascia. 35 lbs of pressure is recommended. **See picture 14.**
- 10) Drill a 9.5mm or 3/8" hole through both the wheel house liner and diffuser. **See picture 15.**
- 11) Insert Pushpin in hole to secure diffuser to wheel house liner. **See picture 16.**
- 12) Let vehicle sit for 12 hours before driving to allow for tape to properly cure and adhere to the paint surface.

**Picture 1**



**Picture 2**



**Picture 3**



**Picture 4**



**Picture 5**



**Picture 6**



**Picture 7**



**Picture 8**



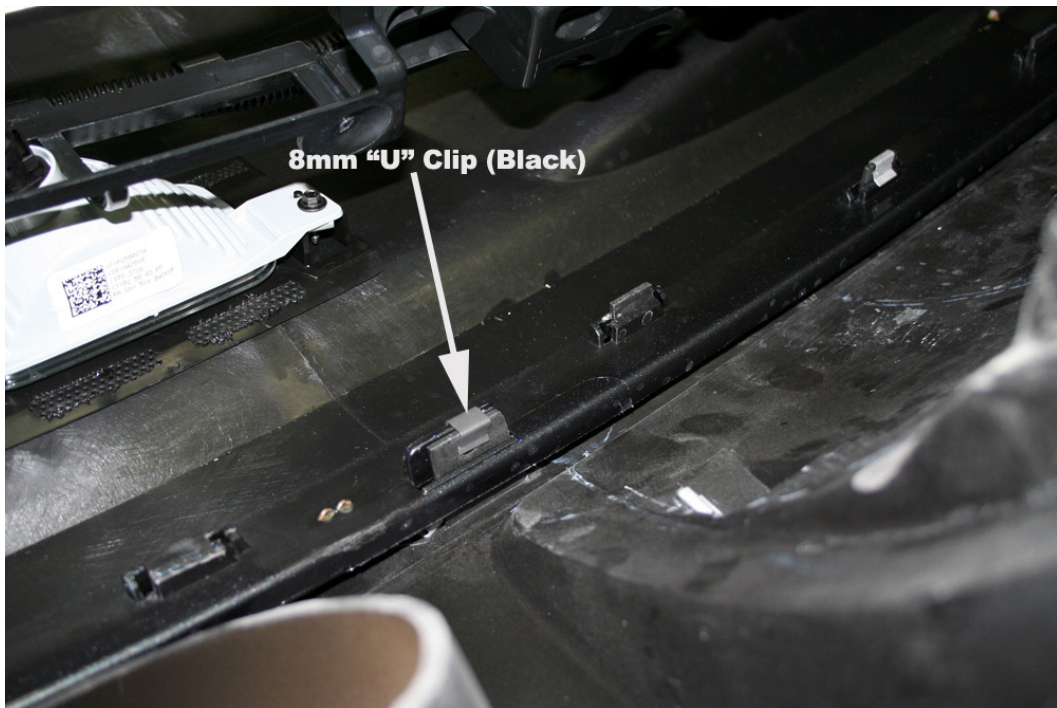
**Picture 9**



**Picture 10**

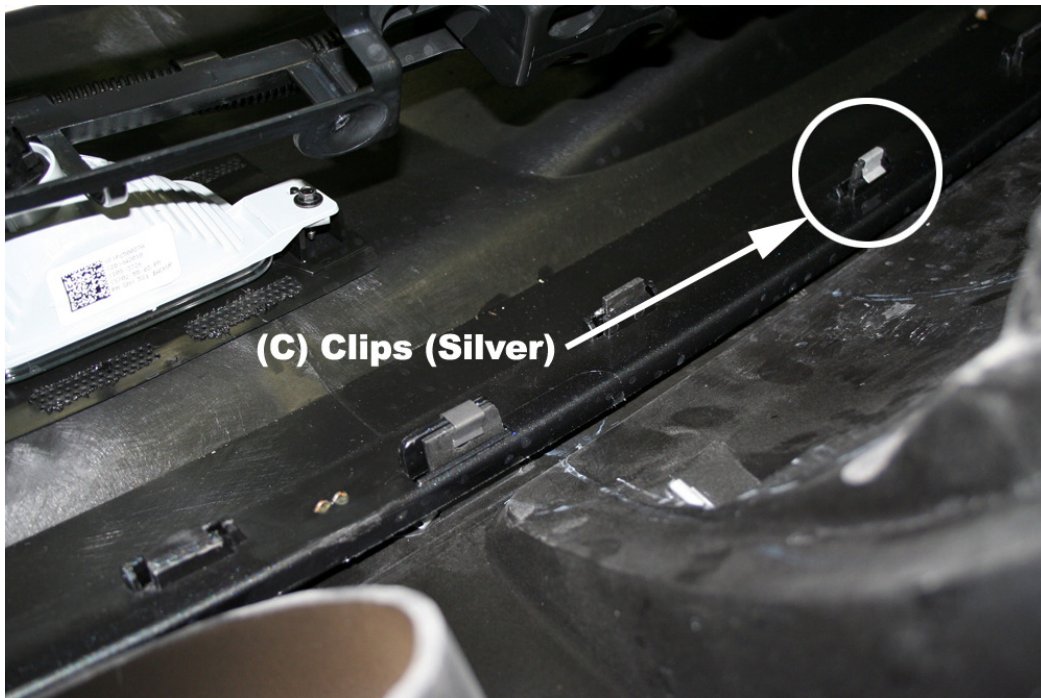


**Picture 11**





Picture 12



Picture 13



**Picture 14**



**Picture 15**



**Picture 16**

