

2006 + Z06/ZR1 2008 + C6 (w/npp option) WILD 2 MILD EXHAUST CONTROL (rev.8/5/08)

Please read these instructions completely, prior to installing the WILD 2 MILD Z06 exhaust control. This product is patent pending and is not to be reproduced without the written consent of nakidparts.com.

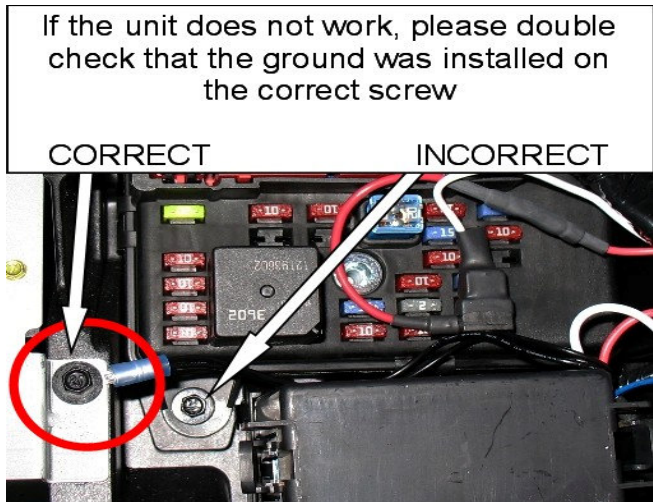
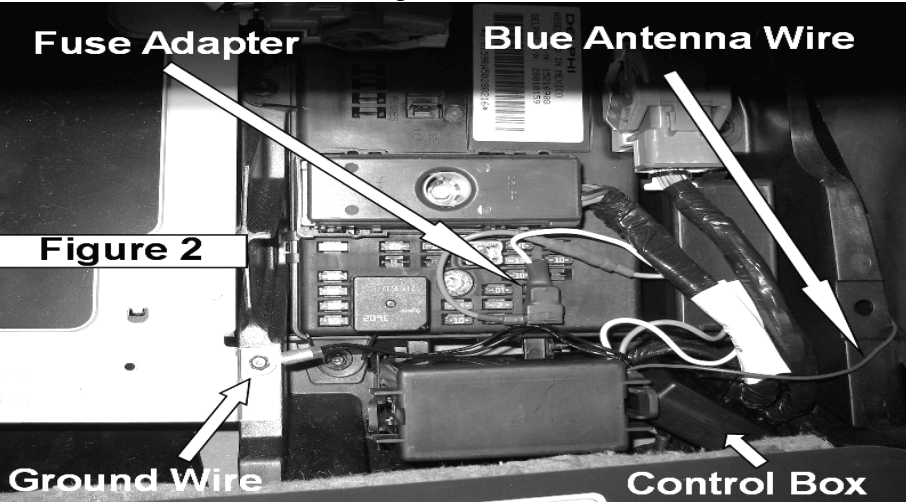
If the car is going to be left IDLE for an extended period of time (3-4 weeks) without starting. The control should be set to "OFF" prior to shutting the car down. This will minimize battery drain. In the "OFF" position 4+ months is not an issue or if you use a battery maintainer it's not an issue. The last 2 pages show an alternate method of installation that has 0 battery drain but will cause the exhaust to always start in the "OFF" or wild setting.

Tools required: 7mm socket, wrench or a pair of pliers

Remove the passenger side floor mat. Reach up and pull down the passenger side floorboard to access the fuse block. Remove the 10A fuse located on the bottom right side (see fig. 1) **AFTER INSTALLATION, IF IT DOES NOT WORK OR STOPS WORKING SEE PAGE 5**



Insert the new fuse adapter into the slot you just removed the 10A fuse from. The adapter must be installed as shown with the white wire facing up and the red wire facing the center console. **Remove the grounding screw, and re-install it with the two black ground wires by inserting the screw through the connector, tighten.** Slip the control box into the location shown and place the blue antenna wire tucking it into the space shown (see fig. 2)



Tuck in all wires so they do not stick above the black box above and below the fuses. Fold back the floorboard and re-install the mat. With the car running, test the switch using the remote control. "ON" will put the exhaust into the stock mode (quite up till 3500 RPM) "OFF" will make the exhaust flaps stay open 100% of the time. The car will always start in the position it was shut down in. Once the buttons are pressed, it will take a few seconds for the flaps to activate. The remotes also will work from outside the car.

HOMELINK Up to 10/2006 (**after 10/06 GM used a new company car2u that does not lean codes so it can not be programmed**) and you can not program to the visor, see mounting on page 3 If you have the homelink system in the driver's visor, you can program the system to run from two of the buttons. One button for "on" and one button for "off". If you only have one spare button you can program the "on" button. This will allow you to put it back into the OEM mode since it started in the open mode. This information is also in your owner's manual plus information on erasing and reprogramming.

NOTE: this unit will work with either of the supplied remotes or the OEM visor mounted Homelink system. It will not work with other visor-mounted units. GM has been testing other visor units, so you may not have a Homelink system. If you have a visor unit with a single LED with the home symbol around it you have Homelink and this can be programmed. If you have 3 LED's, you do not have Homelink and you may not be able program this unit. It will still function fine with the provided remotes.

Programming HomeLink®

Your vehicle's engine should be turned off while programming the transmitter. Follow these steps to program up to three channels:

1. Press and hold down the two outside buttons, releasing only when the indicator light begins to flash, after 20 seconds. Do not hold down the buttons for longer than 30 seconds and do not repeat this step to program a second and/or third transmitter to the remaining two HomeLink® buttons.
2. Position the end of your hand-held transmitter about 1 to 3 inches (3 to 8 cm) away from the HomeLink® buttons while keeping the indicator light in view.
3. Simultaneously press and hold both the desired button on HomeLink® and the hand-held transmitter button. Do not release the buttons until Step 4 has been completed.

4. The indicator light will flash slowly at first and then rapidly after HomeLink® successfully receives the frequency signal from the hand-held transmitter. Release both buttons.
5. Press and hold the newly-trained HomeLink® button and observe the indicator light.
If the indicator light stays on constantly, programming is complete and your device should activate when the HomeLink® button is pressed and released.

To program the remaining two HomeLink® buttons, begin with Step 2 under "Programming HomeLink®." Do not repeat Step 1 as this will erase all of the programmed channels.

IMPORTANT: IN STEP 4, DO NOT RELEASE EITHER BUTTON UNTIL THE RED LED STOPS FLASHING.

Installation and use of this product is done at the owners / installers own risk. The seller of this product is not responsible for any damage or injury caused by the use or installation of this product. No refunds or returns on this item. If defective it will be replaced only.



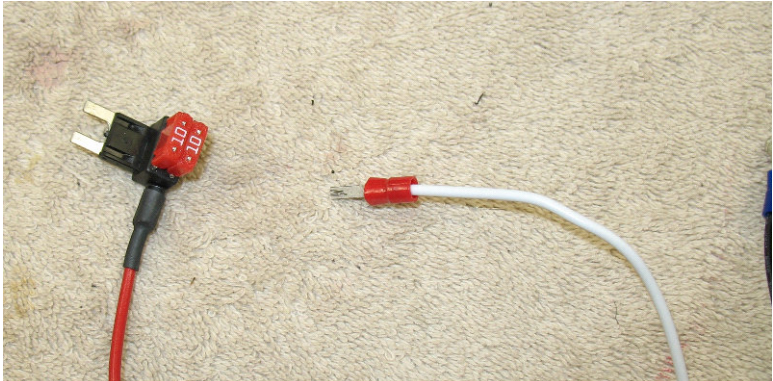
The wireless remote can be mounted anywhere. Most customer leave the flaps open and only close them when cruising on the highway. The 2nd remote can be used to amaze your friends as you show them the MILD and WILD side of your Z06 while standing in back of the exhaust



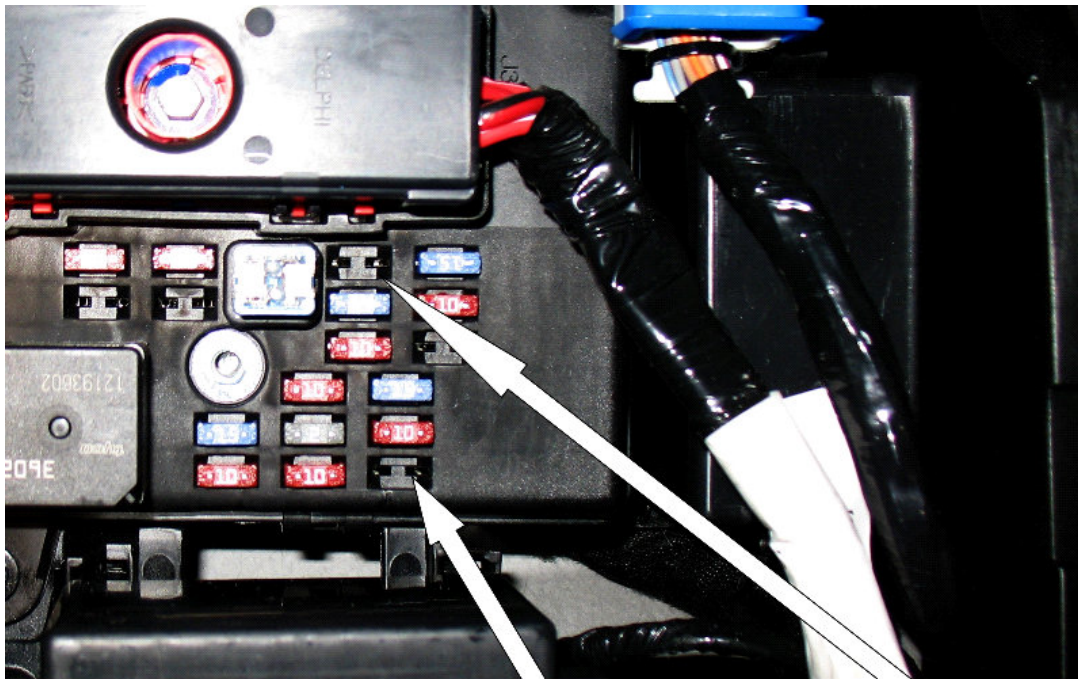
Zero Drain Install



Slip back or carefully cut the shrink wrap that covers the fuse and spade. This will expose the 10A fuse and the tap at the end of the white wire.
NOTE. color of shrink wrap and tap may be different than picture

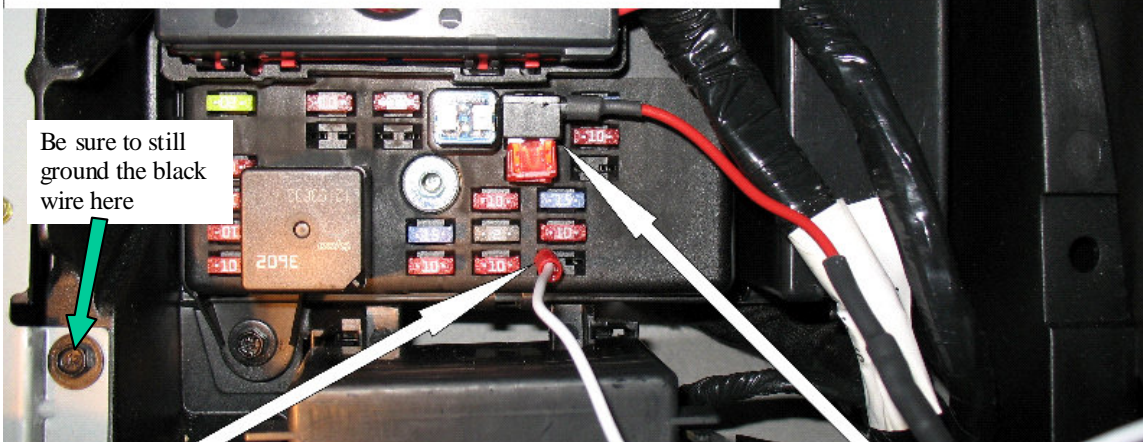


Install the 10A fuse you removed from the seat heater slot in the fuse block Yours should look like this 2 10A fuses installed in



Remove the seat heater fuse and the exhaust fuse

Install the fuse tap in the seat heater spot making sure the red wire exits to the right and the fuses point down. Install the white wire spade in the exhaust fuse spot on the LEFT SIDE ONLY



Be sure to still ground the black wire here

Install the white wire spade in the exhaust fuse spot on the LEFT SIDE ONLY

Install the fuse tap in the seat heater spot making sure the red wire exits to the right and the fuses point down.

PROBLEM SOLVING:

1. Check the picture below and make sure you have the ground installed on the correct screw.
2. Check both remotes, does one work or do they work interment? 99% of the problems have to do with loose or dead batteries, don't assume if you see the red led light that the battery is OK, it could be low. Remove the small Phillips screw on the back of the remote. If you have a volt meter check and see that you have 12.2vdc. Gently bend in the negative tab a little and make sure you reinstall with the correct polarity. If you need a battery we have them or you can purchase them 27A is the type, radio shack has them.

If the unit does not work, please double check that the ground was installed on the correct screw

CORRECT

INCORRECT

