

C6 & GS LED COVE KIT

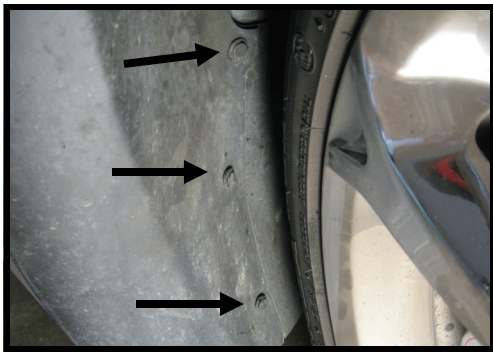
This kit can be installed without removing the front wheels if you turn the wheels toward the side you are working on. It is not necessary to remove the inner cove shield unless you are going to paint it. Painting the cove shield the same color as the led's gives the led's something to reflect off of and really makes the color "POP"!!

SUGGESTED TOOLS

10 & 13 MM Sockets & extension. 7mm socket or wrench Panel removal tool Flat screwdriver Protective tape OPTIONAL: Paint for cove shields if you are painting them.



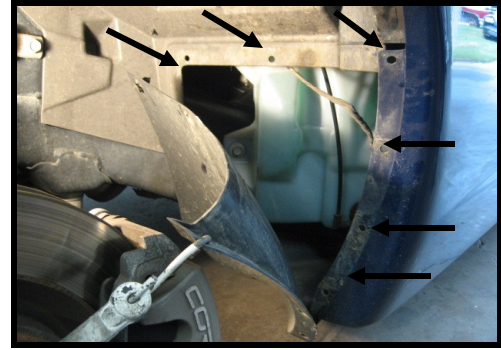
Place the remote control box by the battery and stretch the long led wire across the cowl. Pull the cowl weather strip off by pulling forward on it.



On GS and other later model c6's this is the style of inner fender panel. Remove 3 plastic retainers by pulling the center pin then remove the entire retainer. There is also a 8mm bolt on the bottom you can remove. Your not done yet, there are 5 clips that hold the panel to the outer lip of the fender.



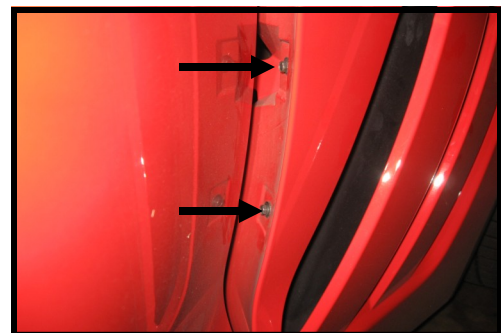
Shield removed to gain access to cove area. Leds will drop into this area for installation.



There are 2 styles of inner fender shields depending on the year and model of c6. This shows 1 style. Remove plastic retainers so you can pull shield back to gain access to cove area.



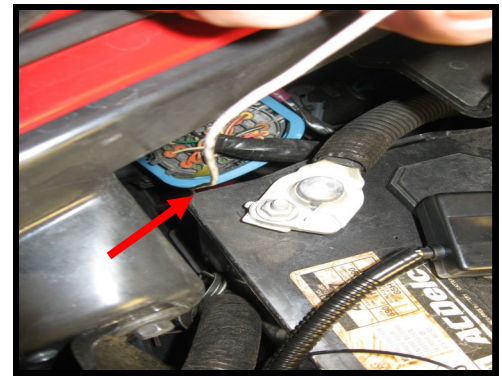
Using a panel removal tool and a shop rag to protect paint, pry between the panel and fender to unlatch these clips. The one at the top of the fender has a hooked retainer so remove the 2nd and 3rd ones first



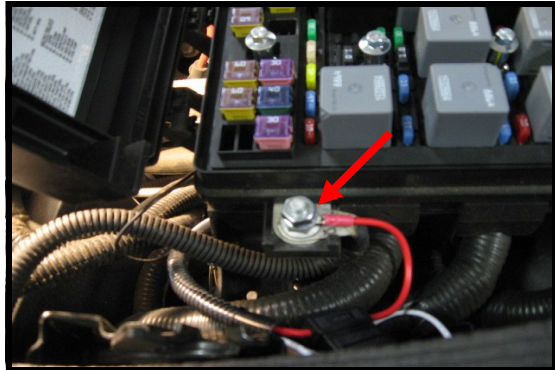
If you plan on removing the cove shields to paint, you need to remove these 2 screws from the rear of the fender. Open door, put protective tape around this area to protect the paint. The shield is also held on by 2 adhesive pads. New adhesive pads provided.



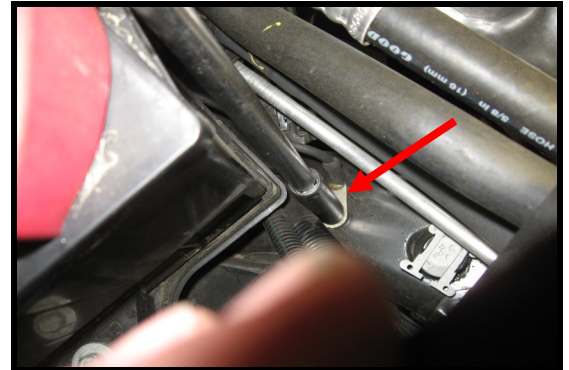
On the drivers side, drop the leds past the washer reservoir & into the cove area. Wipe mounting area with alcohol pads. The best light pattern is achieved by placing the strips about 1" back from the rear edge of the opening facing the shield. Hold strips in place firmly for a minute.



On the passenger side, Use a coat hangar to find a path down to the cove area. Route leds down to the cove opening and use the same procedure to mount them as the drivers side.



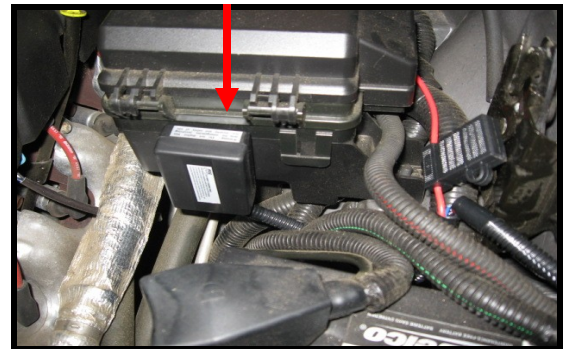
Open the cover over the + battery connection at the under hood fuse box. Place red wire from control box over this stud and secure with provided nut.



Below the battery tray along the frame rail there is a ground nut. Place the black wire from the control box over this stud and attach with the provided nut. You can now test the cove lights.



Secure the wire across the cowl by inserting it into the weatherstrip and pressing the strip back in place across the cowl area.



After all wires are secured and lights are working, You can now mount the control box. The box is not water-proof so cover when washing engine compartment. You can now re-assemble all shields. Remember, the Inner fender panels have a hooked clip on the top that should go in first. Enjoy the new lights!!

