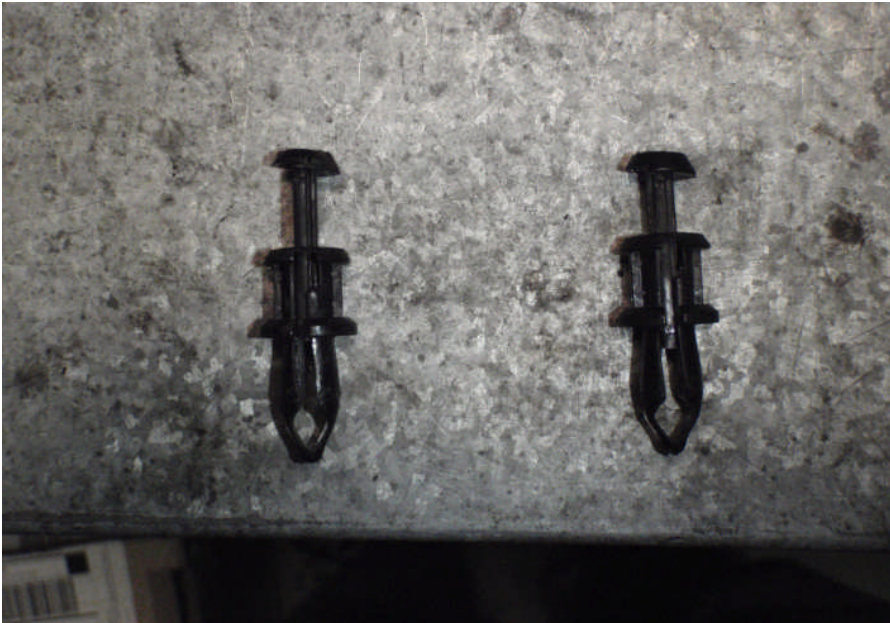


## INSTRUCTIONS FOR INSTALLING THE HALLTECH VENOM 2 SYSTEM ON A C5 CORVETTE.

1. Remove the OEM air inlet tube. Unscrew and remove the hose clamps. The tube is secured to the radiator shroud with two small fasteners. Pull up on the top and the fastener can then be removed.

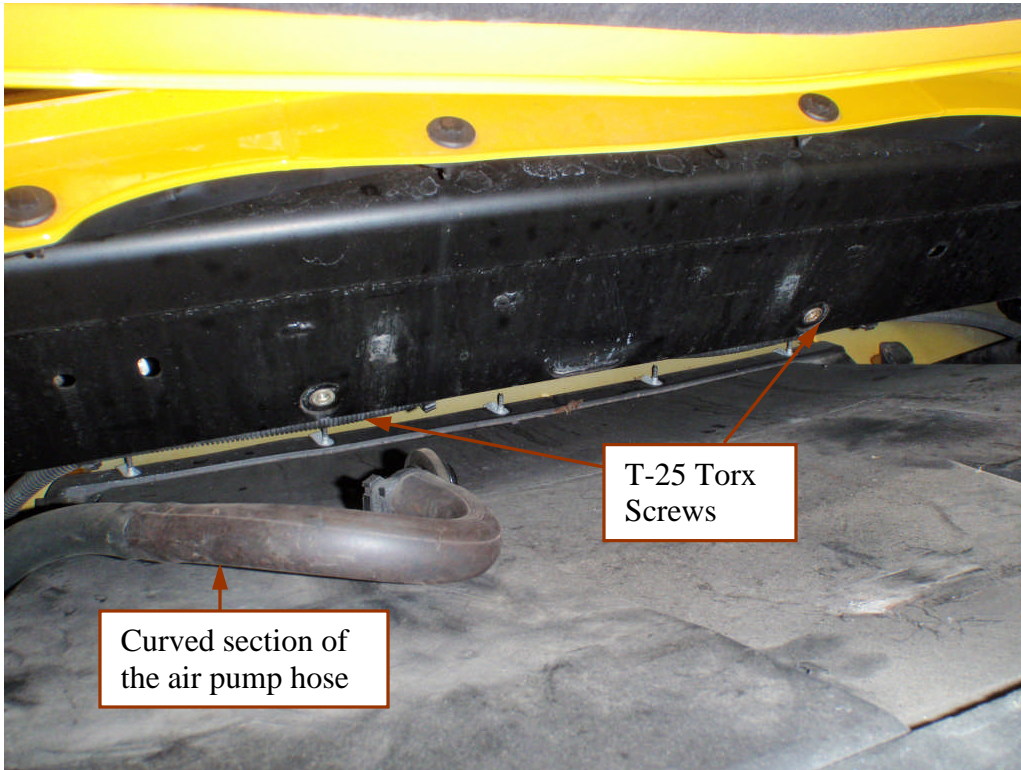


OEM air inlet tube



Fasteners - (Head is pulled up)

2. Next, remove the factory air cleaner housing. It is secured to the front valance behind the nose with two Torx screws. (T-25) They can be difficult to reach.



Remove the T-25 Torx Screws from inside the air filter box. This photo also shows the air inlet tube for the air pump.



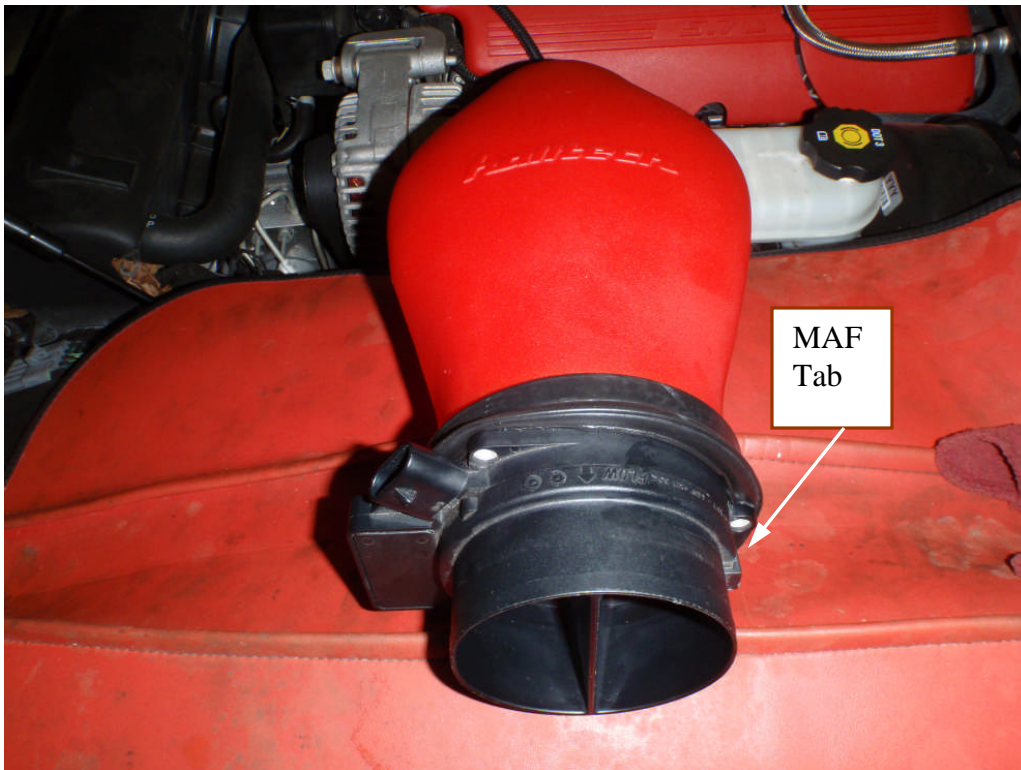
Location of the Torx screws on the bottom of the air box.



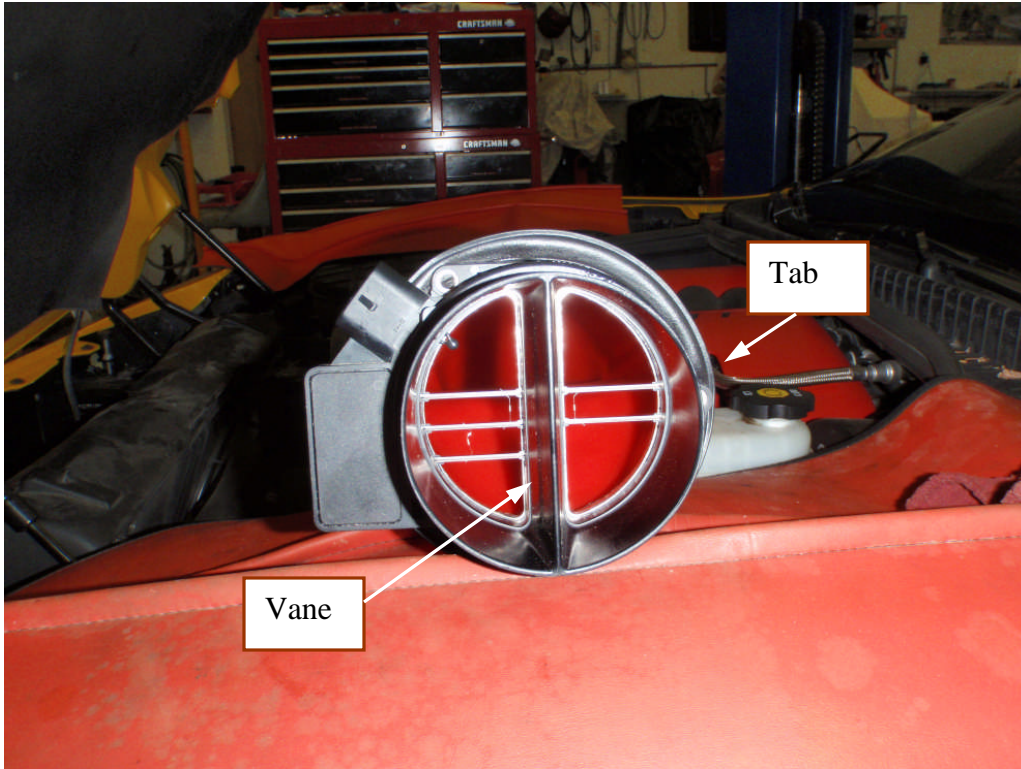
3. The next step is to separate the Mass Air Flow Sensor (MAF) from the old air tube and install it on the new air tube. Remove the tan clip from the connection to the MAF and the wire can then be unplugged.

4. Use a heat gun or hair dryer to warm up the rubber connection on the new air tube before trying to install the MAF. The MAF air flow vane should be perpendicular to the air flow.

Place the air tube on a solid surface like a table and push the MAF into the rubber connector. (This can be difficult) Install the hose clamp, but do not tighten yet.



View of the MAF installed in the air tube. The cast "Halltech" logo will be facing you and the position of the wiring connector will be as shown. (Note position of vane)



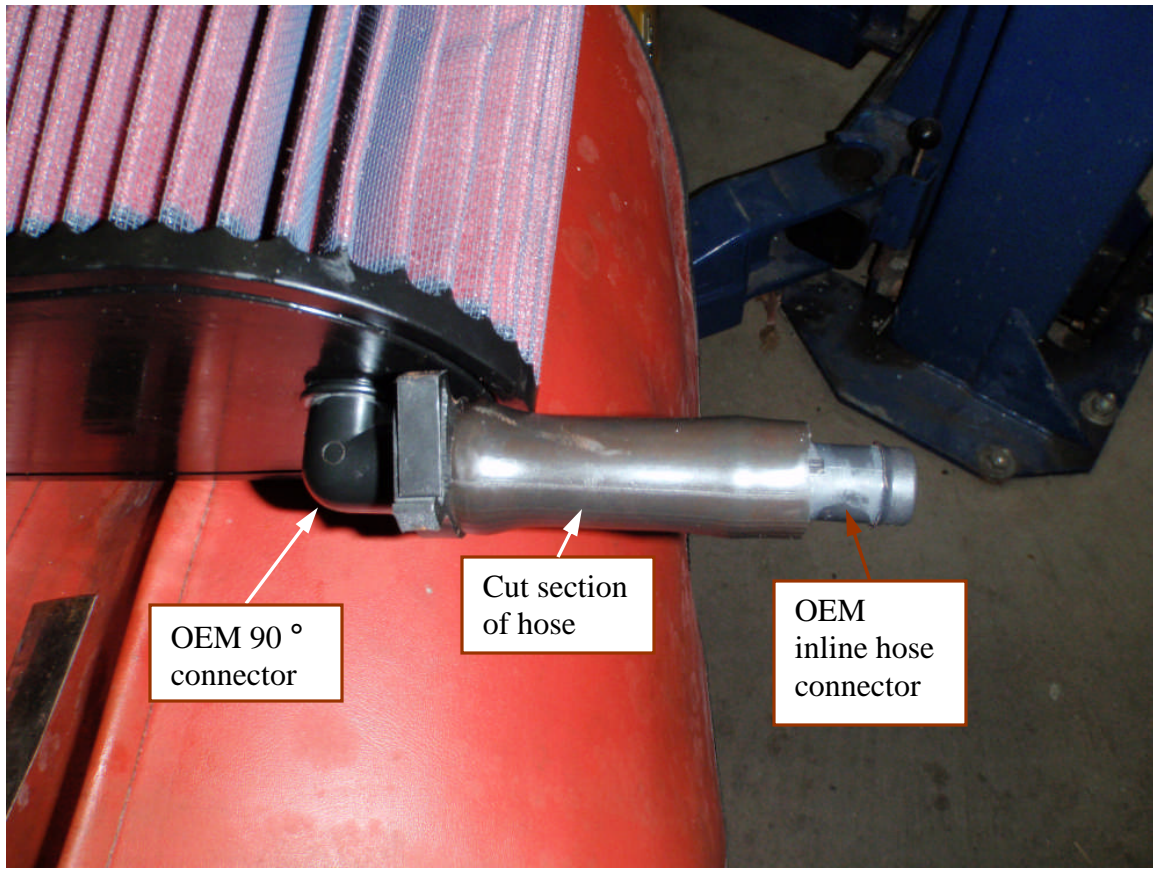
MAF vane position

5. Take the rubber connecting boot and install it over the throttle body inlet. It may be necessary to heat the rubber tube to get it to go over the throttle body. Install the hose clamp, but do not tighten. The connecting hose will have to be positioned to accept the tab on the MAF. (The rubber boot can be positioned over the MAF and then put a small mark on the top center of the rubber boot. This can then be aligned with the top center of the throttle body.)



6. Remove the 90 ° fitting from the OEM air filter box or the air pump hose. Plug the fitting into the hole in the bottom of the Halltech filter. (See the photo of the air pump hose in a previous photo.)
7. Remove the curved section of air pump hose where it is connected with the inline connector. Cut the curved portion of the hose off and install the straight piece to the 90 ° connector. (Note that you cannot get the hose over the 90 ° fitting after the air filter has been installed. Should you skip this step, you will have to remove the assembly again to attach the air pump hose.)





8. Install the Halltech air filter on the end of the tube - leave the hose clamp loose.
9. Install the assembly into position and work the rubber connector over the MAF. (Use a round screwdriver to prevent damage to the connector or the MAF.) Make sure that the tab on the MAF is properly aligned with the notch in the connector. Position the air filter as necessary to get the assembly square. Start at the MAF to rubber connection and tighten the clamps. Position the rubber connector hose as necessary and tighten the clamp between the rubber connector and the throttle body. Do not over tighten either of the clamps. Last step is to position the Halltech air filter as required and tighten the clamp.
10. Re-install the air pump hose over the OEM inline connector in its original position.



11. Hook up the wiring connection to the MAF. (Curl the wire and plastic conduit underneath the plastic cover and tie wrap it to the existing harness so it looks nice and neat. Also line up the hose clamps so they are neat appearing.)

DONE!!



